



Apartment Studio

47 m² Praha 3, Zvěřinova

900 € per month



Layout
Studio

Area
47 m²

Balcony
9.1 m²

Parking
1x garage

Very well laid out 1+kk apartment with a large, covered balcony in a new building, filled with plenty of natural light and space. A parking space in the garage and a cellar are included in the price. The apartment is available immediately and is suitable for 1-2 people for long-term rental (min. 1 year). The apartment is available from December 2, 2024.

The interior, with a floor area of 47.3 m², consists of an entrance hall, a bathroom with a toilet and bathtub, and a main living space of 34.8m², which is complemented by a large balcony of 9.1 m². The kitchenette is located to the side of the main living area and is equipped with an induction hob, electric oven, large refrigerator with freezer, dishwasher, and a large work surface. The apartment features pleasant tall doors, built-in wardrobes in the entrance area, and high-quality wooden floors.

The rent is 21,500 CZK/month plus service charges of 3,800 CZK/month. Electricity is transferred to the tenant's name. The apartment owner reserves the right to select tenants based on their own criteria.

Nice apartment in a new building in the pleasant environment of Třebešín at the

Price	900 €
Floor area	47 m ²
Balcony	9.1 m ²
Floor	4
Elevator	Ano
Parking	1x garage
Building energy rating	B

Apartment Studio

47 m² Praha 3, Zvěřinova

900 € per month



border of Vinohrady and Strašnice, with access to the Želivského or Florenc metro stations, and the Žižkov freight station tram is 600 m from the house.

VÁŠ MAKLÉR



Hana Fisherová

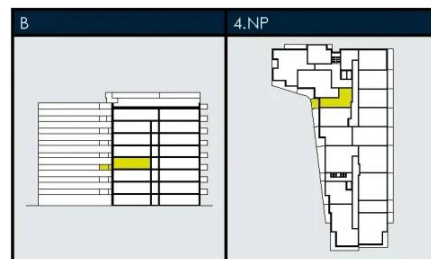
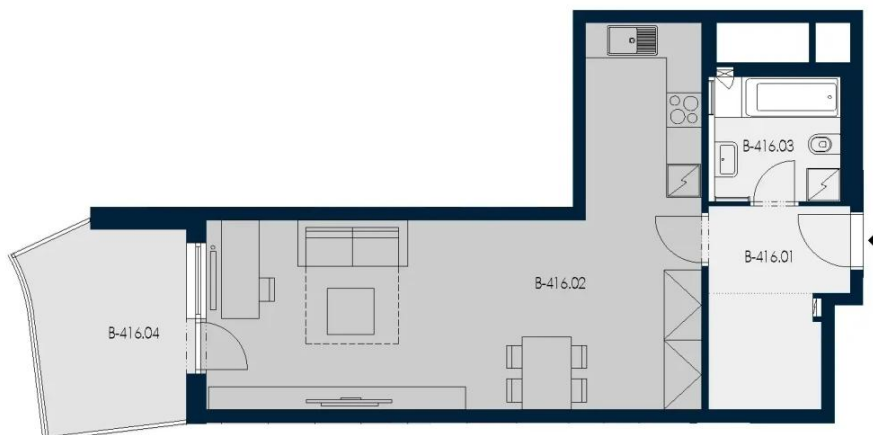
+420 602 544 858

info@philip-frank.com

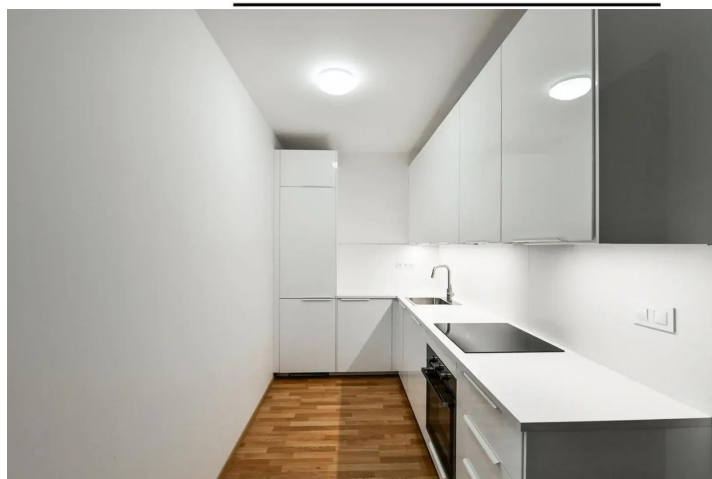
Apartment Studio

47 m² Praha 3, Zvěřinova

900 € per month



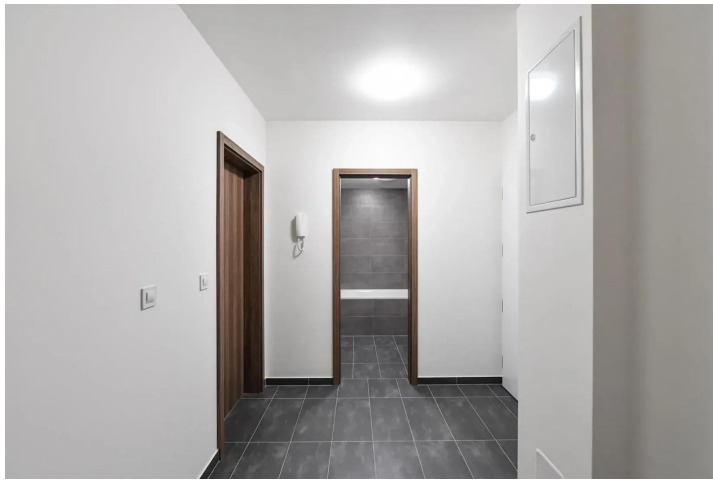
BYT B-416		
B-416.01	Předsíň	7,63 m ²
B-416.02	Obývací pokoj + kk	34,81 m ²
B-416.03	Koupelna + WC	4,86 m ²
UŽITNÁ PODLAHOVÁ PLOCHA BYTU		47,30 m ²
PODLAHOVÁ PLOCHA BYTU		50,71 m ²
B-416.04	Balkon	9,09 m ²



Apartment Studio

47 m² Praha 3, Zvěřinova

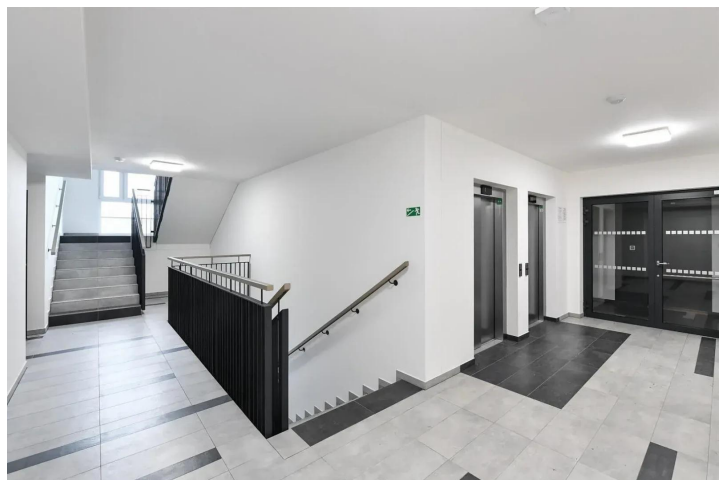
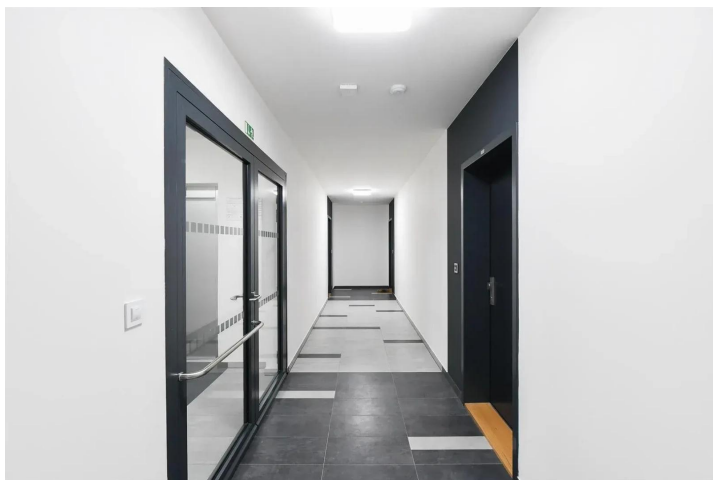
900 € per month



tulipa **třebešín** OBJEKT B NADZEMNÍ PODLAŽÍ 4. DISPOZICE 1+kk



Upozornění: Tato grafická zobrazení plochy bytu je zpracována pasivně integrovaně. Všechny jednotlivé měřiče jsou pouze orientační. Inženýrské plánování v oblasti (dlažby, kuchyňská linka, at. spotřebiče, vestavné sítě) není součástí ceny bytu a je provedeno dle potřeby.



Apartment Studio

47 m² Praha 3, Zvěřinova

900 € per month

