



Apartment Two bedroom

133 m² Praha 5, Na bělidle

762 800 €



Layout
Two bedroom

Area
133 m²

Balcony
5 m²

Parking
1x covered

We would like to present for sale a spacious apartment 3 + kk of 128 m² with a balcony (5 m²). The apartment is situated on the second floor of a residence with elevator, in a beautiful location of Prague 5 - Smíchov.

The apartment offers an entrance hall with built-in wardrobe, airy living room with fully equipped kitchen. There is also a master bedroom with en-suite bathroom (with shower), a second bedroom, a separate bathroom (with bathtub) and a separate toilet. The master bedroom also has access to a balcony overlooking the quiet courtyard. The apartment has a parking space in the underground garage.

In the vicinity you will find all amenities. Within walking distance there are cafes, restaurants, supermarkets, cinema and shopping center OC Nový Smíchov. The nearest tram and metro stop is a 5-minute walk from the house.

Do not hesitate to contact us for a viewing.

Price	762 800 €
Floor area	133 m ²
Balcony	5 m ²
Floor	1
Elevator	Ano
Parking	1x covered
Building energy rating	C

Apartment Two bedroom

133 m² Praha 5, Na bělidle

762 800 €



VÁŠ MAKLÉR



Nicolas Peknik

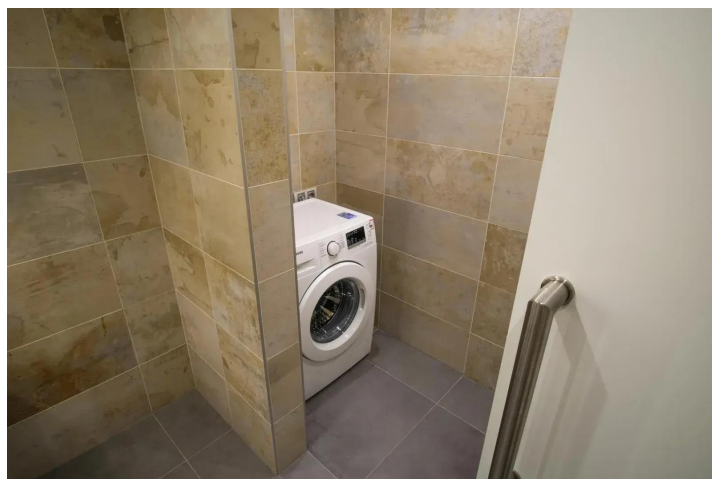
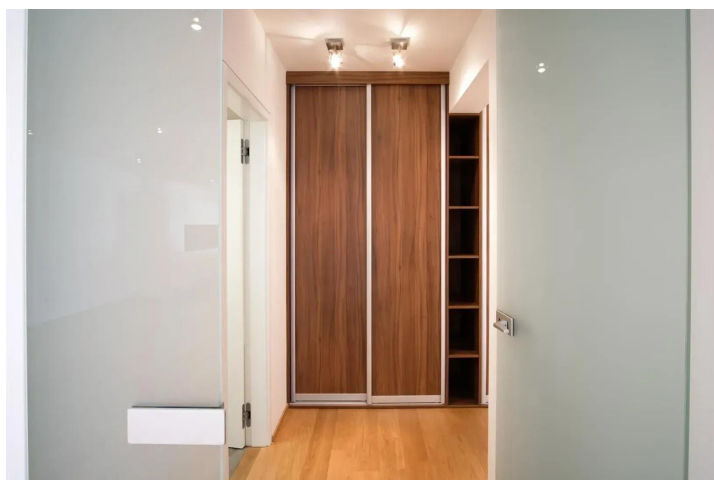
+420 602 544 858

info@philip-frank.com

Apartment Two bedroom

133 m² Praha 5, Na bělidle

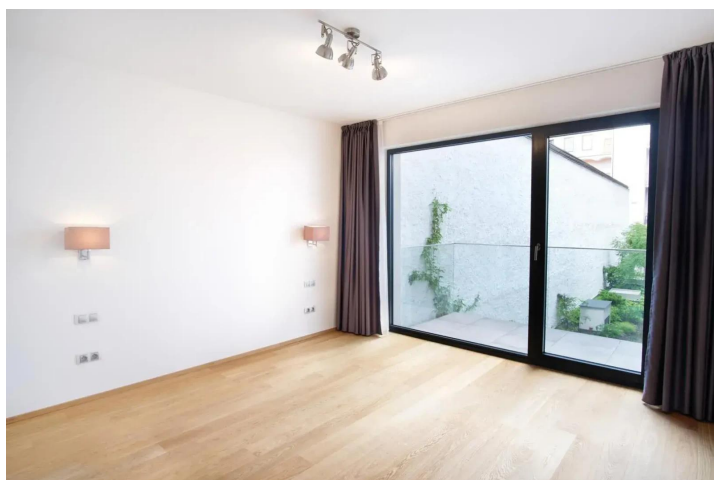
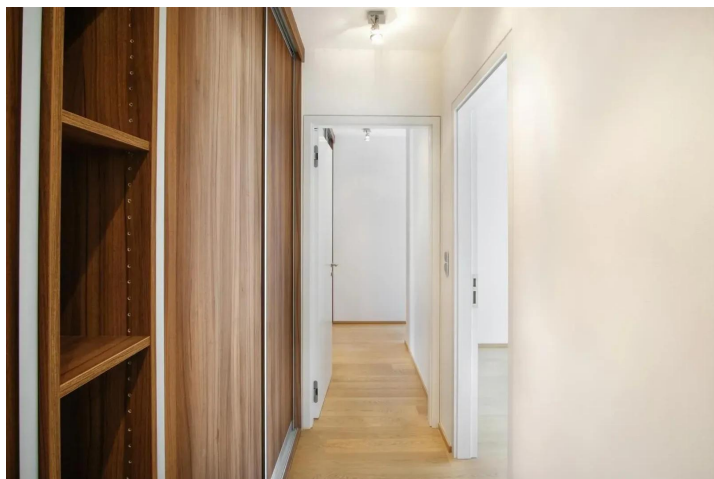
762 800 €



Apartment Two bedroom

133 m² Praha 5, Na bělidle

762 800 €



Apartment Two bedroom

133 m² Praha 5, Na bělidle

762 800 €

