



Apartment One bedroom

55 m² Praha 5, Mukařovského

1 000 € per month



Layout
One bedroom

Area
55 m²

Loggia
5 m²

Parking
1x basement

We are offering for rent 1 bedroom apartment with a floor area of 55 sq.m. featuring a balcony, garage parking, and a cellar in the new residential project Alfa Residence in Prague's Stodůlky district. The apartment is situated on the 7th level of a new building with an elevator and underground parking.

The interior of the apartment consists of an entrance hall with built-in wardrobes, a living room with a kitchenette equipped with appliances, a bedroom with a wardrobe, a dressing room, and a bathroom with a bathtub and toilet. Both rooms lead to a balcony offering wide views of the surroundings.

High-quality materials have been used in the apartment. The rent includes one parking space and a basement. The rent is 25,000 CZK per month + charges of 3,700 CZK per person + electricity, which is transferred to the tenant.

In the vicinity, you will find a wide selection of restaurants, shops, and services. Excellent transport accessibility thanks to the B - Luka metro station. Schools and sports facilities are within close reach. Central Park and Prokop Valley offer opportunities for walks and sports activities. The owner reserves the right to select a tenant based on his own criteria.

Price	1 000 €
Floor area	55 m ²
Loggia	5 m ²
Cellar	3 m ²
Floor	6
Elevator	Ano
Parking	1x basement
Building energy rating	C

Apartment One bedroom
55 m² Praha 5, Mukařovského

1 000 € per month



VÁŠ MAKLÉR



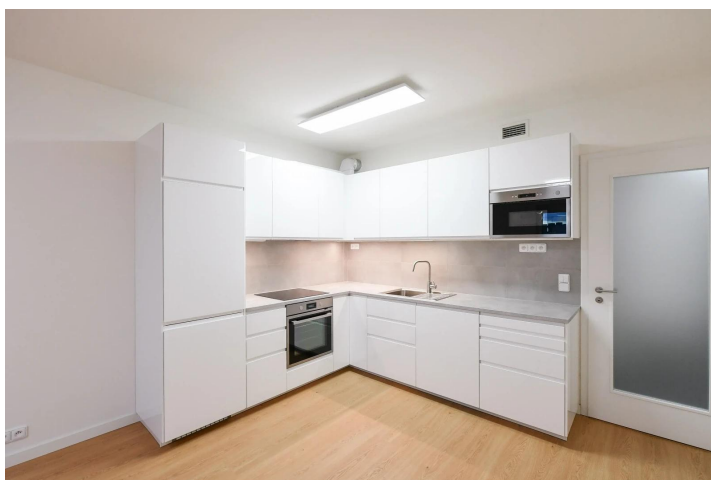
Linda Svobodová

+420 602 544 858

info@philip-frank.com

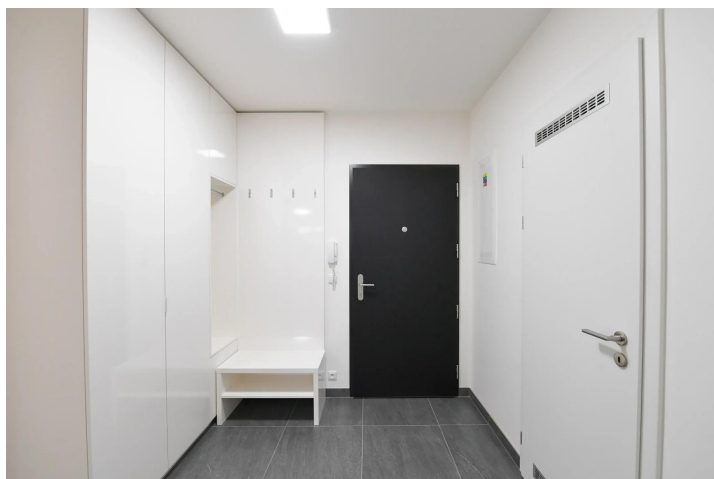
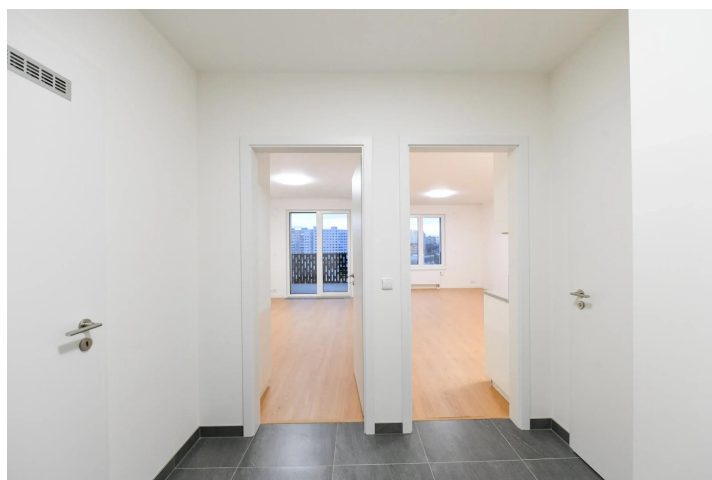
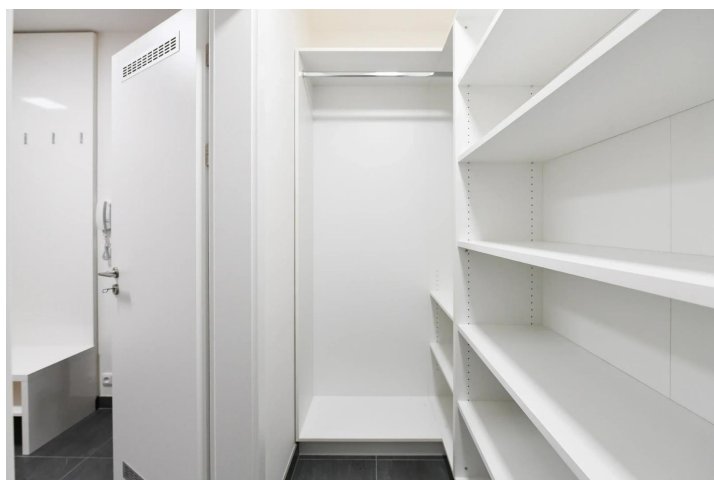
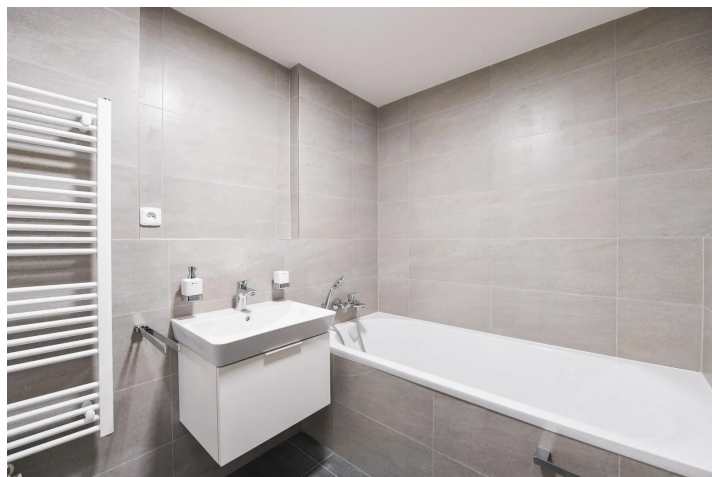
Apartment One bedroom
55 m² Praha 5, Mukařovského

1 000 € per month



Apartment One bedroom
55 m² Praha 5, Mukařovského

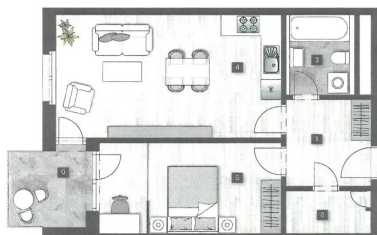
1 000 € per month



Apartment One bedroom

55 m² Praha 5, Mukařovského

1 000 € per month



allaresidence

A.77
2+KK / 58,4 m² / 7NP

01	hala	7,0 m ²
02	koridore	4,3 m ²
03	loziskovna	4,3 m ²
04	obývací pokoj + kk	25,0 m ²
05	ložnice	16,0 m ²

Užitná plocha bytu: 54,6 m²
Podlahová plocha bytu: 58,4 m²
06 lodžie 6,3 m²

7NP

