



## Apartment Three bedroom

130 m<sup>2</sup> Praha 6, Radimova

2 600 € per month



Layout  
**Three bedroom**

Area  
**130 m<sup>2</sup>**

Terrace  
**105 m<sup>2</sup>**

Spacious three- bedroom apartment in the Kajetánka project + 105 m<sup>2</sup> terrace + two bathrooms + 2x parking in the building + cellar

We offer to rent a spacious three-bedroom apartment of 130 m<sup>2</sup> with a terrace of 105 m<sup>2</sup> located on the first floor of the modern Kajetánka project - Prague 6 - Břevnov.

The project is truly unique because it is a new building sensitively set in the extensive Kajetánka park, which houses two historic buildings: a baroque chateau with a restaurant and an Orangery.

The apartment, ideal for a family, features a living room with a fully equipped kitchen and direct access to the terrace, a master bedroom with its own bathroom and also access to the terrace, a second bedroom with a dressing room, a third separate room, a second bathroom, a utility room, a separate toilet, and a hallway. High-quality materials and equipment are used throughout the property. The windows are French with triple-glazing insulation and all have external electric blinds. Tenants will certainly appreciate the spacious cellar and two garage parking spaces in the building under one roof.

<b>Price</b>	2 600 €
<b>Floor area</b>	130 m <sup>2</sup>
<b>Terrace</b>	105 m <sup>2</sup>
<b>Floor</b>	1
<b>Elevator</b>	Ano
<b>Building energy rating</b>	B

## Apartment Three bedroom

130 m<sup>2</sup> Praha 6, Radimova

2 600 € per month



A comfortable location full of greenery, yet with excellent accessibility to the city center and the airport.

Rent 65,000 CZK + 9,000 CZK utilities prepayments + electricity transferred to the tenant. Energy class B building – very economical.

»»» For more information, please do not hesitate to contact us. We highly recommend a viewing.

Available from March 2025.

The landlord reserves the right to choose the tenant according to their own criteria.

## VÁŠ MAKLEŘ



**Markéta Čekalová**

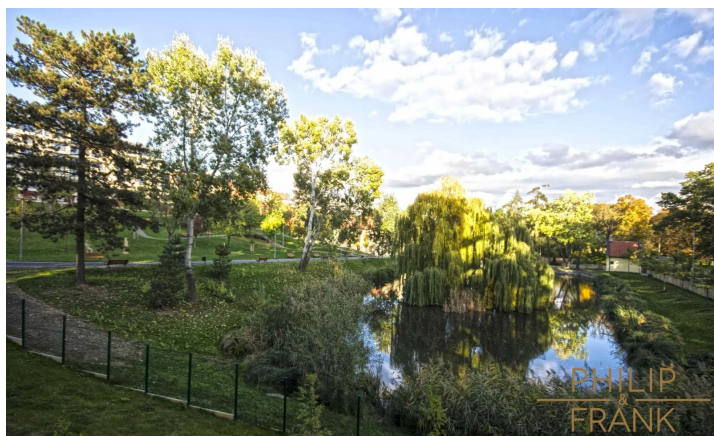
+420 602 544 858

info@philip-frank.com

# Apartment Three bedroom

130 m<sup>2</sup> Praha 6, Radimova

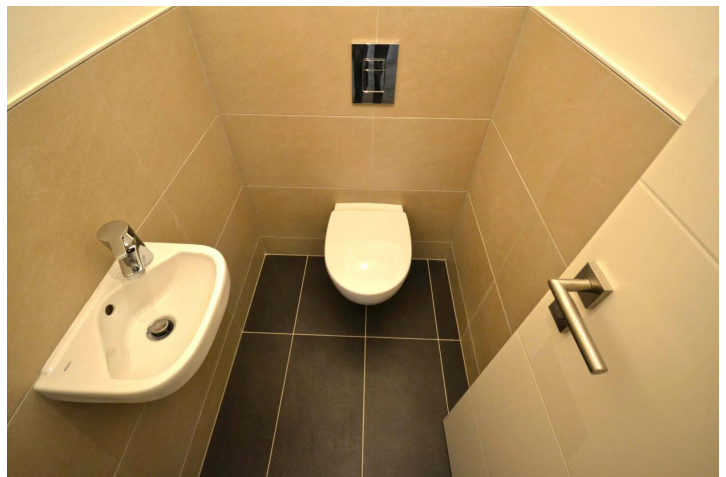
2 600 € per month



# Apartment Three bedroom

130 m<sup>2</sup> Praha 6, Radimova

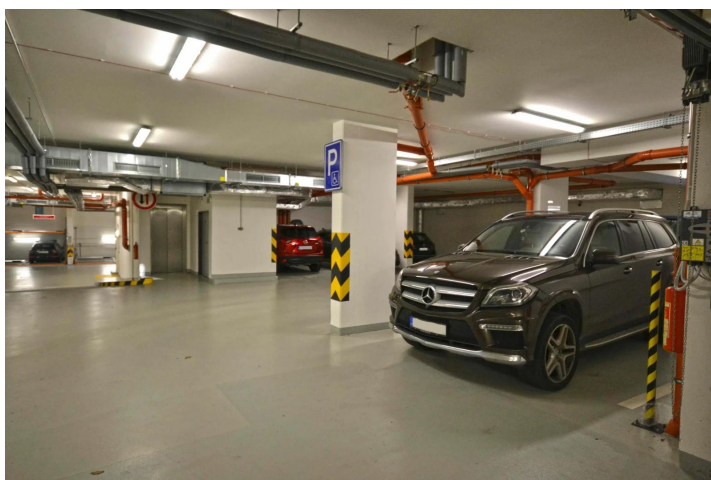
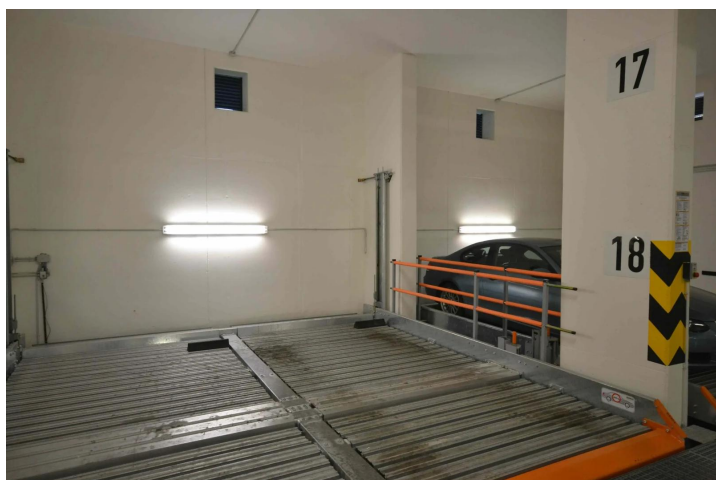
2 600 € per month



# Apartment Three bedroom

130 m<sup>2</sup> Praha 6, Radimova

2 600 € per month



## CLASSIC TERRACE

4+KK



01	PŘEDSÍŇ / ENTRY	6,0 m <sup>2</sup>
02	CHODBA / CORRIDOR	9,6 m <sup>2</sup>
03	KOCHOKA / UTILITY	1,6 m <sup>2</sup>
04	WC / TOILET	1,8 m <sup>2</sup>
05	SATNA (ALT. KOUPELNA) / CLOAK-ROOM (OPT. BATHROOM)	4,0 m <sup>2</sup>
06	LOŽNICE / BEDROOM	15,3 m <sup>2</sup>
07	LOŽNICE / BEDROOM	13,9 m <sup>2</sup>
08	OBYVACÍ POKOJ - KK / LIVING ROOM + KITCHEN	38,1 m <sup>2</sup>
09	LOŽNICE / BEDROOM	23,6 m <sup>2</sup>
10	KOUPELNA / BATHROOM	5,3 m <sup>2</sup>
11	KOUPELNA / BATHROOM	6,8 m <sup>2</sup>
12	BALKÓN / BALCONY	6,8 m <sup>2</sup>
13	TERASA / TERRACE	34,4 m <sup>2</sup>
14	TERASA / TERRACE	63,5 m <sup>2</sup>

FLOCHA BYTU CELKEM / LIVABLE AREA TOTAL 150,0 m<sup>2</sup>  
FLOCHA TERASY CELKEM / TERRACE TOTAL 104,7 m<sup>2</sup>