



## Apartment One bedroom

43 m<sup>2</sup> Praha 10, Na palouku

900 € per month



Layout  
**One bedroom**

Area  
**43 m<sup>2</sup>**

Balcony  
**10.4 m<sup>2</sup>**

Loggia  
**10.4 m<sup>2</sup>**

The viewings would be possible only after February 10th.

Furnished quiet apartment + glazed loggia accessible from each room + garage parking + cellar

The 2+kk apartment, measuring 43 m<sup>2</sup> with a loggia of 10.4 m<sup>2</sup>, is located on the 2nd floor of a brick apartment building with an elevator on Na Palouku street, Prague 10 - Strašnice.

The apartment features an entry hall, a simply furnished living room with a fully equipped kitchenette and access to the loggia, a bedroom with access to the loggia (double bed, built-in wardrobes), a bathroom with a shower (washing machine) and a glazed loggia accessible from both rooms.

Excellent transportation accessibility. Tram and bus stops are just a short walk from the house. Želivského metro station on line A is two tram stops away and less than 10 minutes on foot. The area is full of green spaces with several parks within walking distance - Malešický Park, Gutovka, etc. All public amenities are nearby.

<b>Price</b>	900 €
<b>Floor area</b>	43 m <sup>2</sup>
<b>Balcony</b>	10.4 m <sup>2</sup>
<b>Loggia</b>	10.4 m <sup>2</sup>
<b>Floor</b>	1
<b>Elevator</b>	Ano
<b>Building energy rating</b>	C

## Apartment One bedroom

43 m<sup>2</sup> Praha 10, Na palouku

900 € per month



Available immediately. The apartment is non-smoking.

Rent 21,800 CZK/month (including garage parking and cellar) + service charges 3,700 CZK/month + electricity.

The landlord reserves the right to select tenants according to their own criteria.

A security deposit equal to two months' rent is required.

Viewing recommended.

Available in March 2025.

## VÁŠ MAKLEŘ



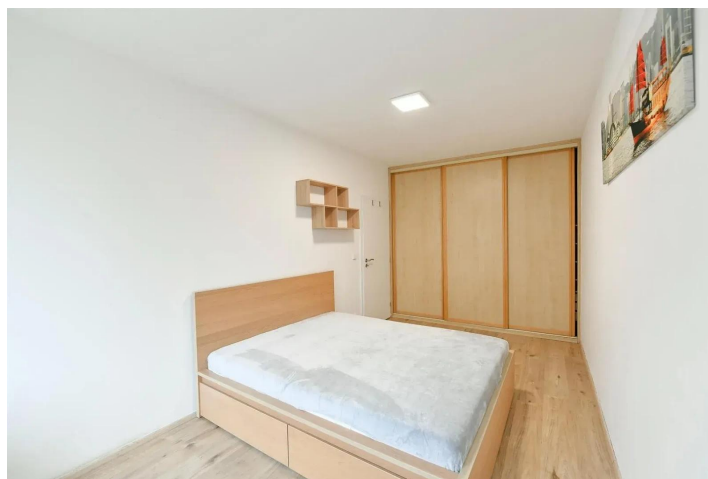
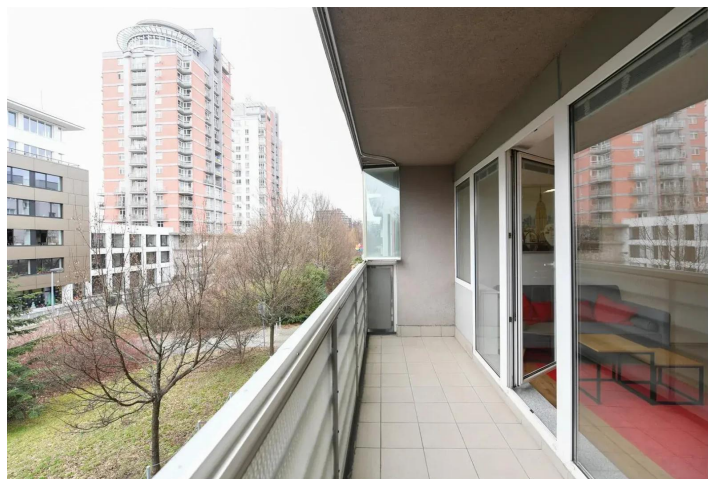
**Markéta Čekalová**

+420 602 544 858

info@philip-frank.com

**Apartment One bedroom**  
43 m<sup>2</sup> Praha 10, Na palouku

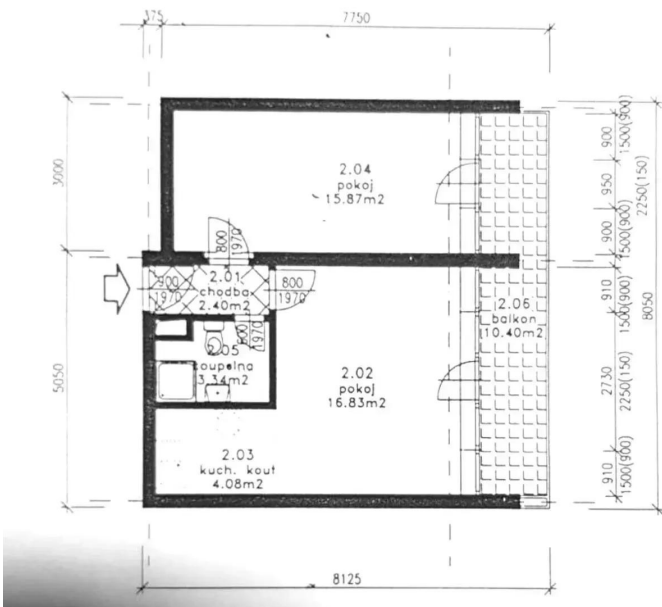
**900 € per month**



# Apartment One bedroom

43 m<sup>2</sup> Praha 10, Na palouku

900 € per month



**Apartment One bedroom**  
43 m<sup>2</sup> Praha 10, Na palouku

**900 € per month**



**Apartment One bedroom**  
43 m<sup>2</sup> Praha 10, Na palouku

**900 € per month**

