



Apartment Two bedroom

91 m² Praha 6, Na Petynce

2 100 € per month



Layout Two bedroom	Area 91 m²	Terrace 35 m²	Balcony 35 m²	Loggia 35 m²	Parking 2x public
------------------------------	---------------------------------	------------------------------------	------------------------------------	-----------------------------------	-----------------------------

We offer for rent a luxury, partially furnished two bedroom apartment with a spacious 35 sqm terrace and a beautiful view of Kajetánka Park.

The apartment, measuring 91 sqm, is located on the third floor of a five-story Kajetánka project. It features a fully equipped kitchen (convection oven, ceramic hob, dishwasher, etc.). The apartment has a spacious living room with a kitchenette, two non-pass-through bedrooms, a huge walk-in wardrobe, a spacious bathroom, and a separate toilet. Client modifications have been made to the apartment, and it is furnished to a high standard.

The apartment comes with a parking space in the underground garage and a storage cellar.

All amenities are available on site.

If you are looking for high-standard housing in the beautiful and peaceful environment of a park near the center of Prague, there is no better choice than living in Kajetánka.

Rent is 52,000 CZK + utilities + electricity. The option to rent a second parking

Price	2 100 €
Floor area	91 m ²
Terrace	35 m ²
Balcony	35 m ²
Loggia	35 m ²
Floor	3
Elevator	Ano
Parking	2x public
Building energy rating	B

Apartment Two bedroom

91 m² Praha 6, Na Petynce

2 100 € per month



spot for 2,000 CZK monthly is available.

The building's energy efficiency is rated B. Highly recommended. Available from May 2025.

VÁŠ MAKLÉR



Markéta Čekalová

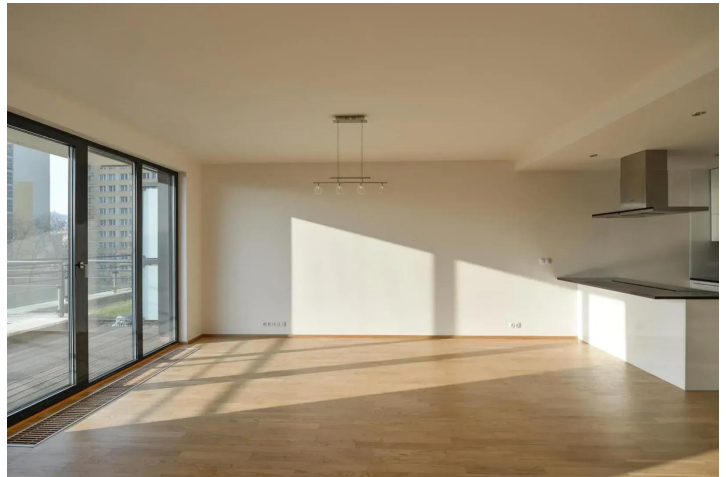
+420 602 544 858

info@philip-frank.com

Apartment Two bedroom

91 m² Praha 6, Na Petynce

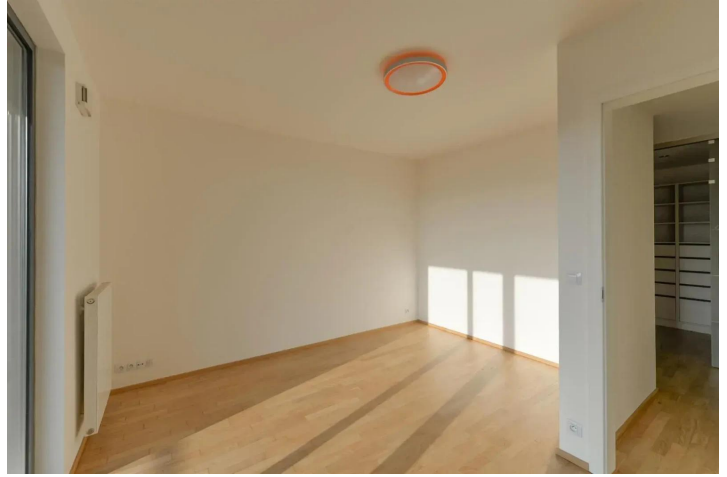
2 100 € per month



Apartment Two bedroom

91 m² Praha 6, Na Petynce

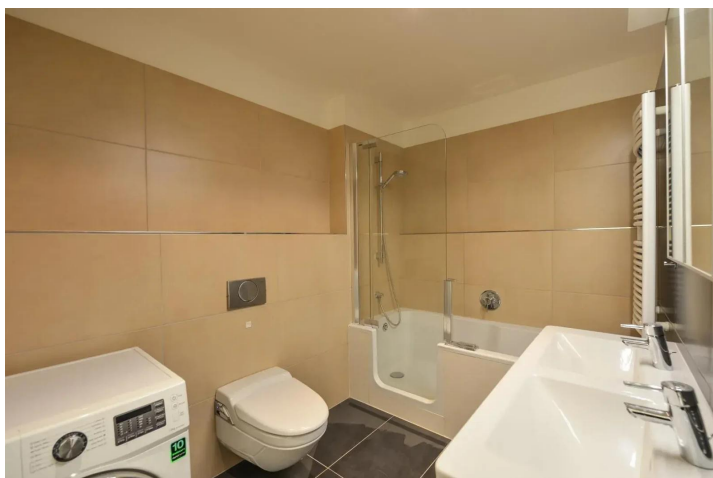
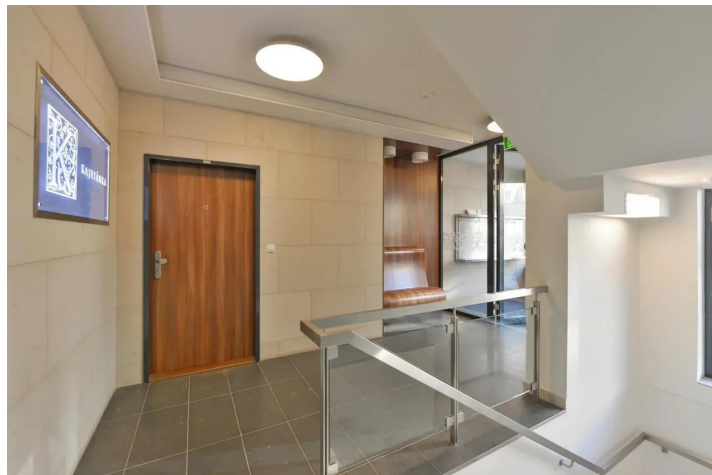
2 100 € per month



Apartment Two bedroom

91 m² Praha 6, Na Petynce

2 100 € per month



01 PŘEDSÍŇ / ENTRY	4,0 m ²
02 OBÝVACÍ POKOJ + KK / LIVING ROOM + KITCHEN	37,3 m ²
03 LOŽNICE / BEDROOM	14,7 m ²
04 LOŽNICE / BEDROOM	18,6 m ²
05 KUCHYŇKA / BATHROOM	3,6 m ²
06 KUCHYŇKA / BATHROOM	4,9 m ²
07 CHODBA / CORRIDOR	6,6 m ²
08 WC / TOILET	1,0 m ²
09 TERASA / TERRACE	35,3 m ²

PLOCHA BYTU CELKEM / LIVABLE AREA TOTAL 90,7 m²

PLOCHA TERASY CELKEM / TERRACE TOTAL 35,3 m²

Apartment Two bedroom

91 m² Praha 6, Na Petynce

2 100 € per month

