



House Seven Bedroom

350 m², Land 569 m² Sydney, Australia

Price upon request



Layout Seven Bedroom

Area
350 m²

This family home is located on one of the best streets directly opposite the green oasis of Kensington Oval and has been carefully maintained for generations. On a generous plot of 569 m², it provides a spacious and comfortable retreat for family life and social gatherings. It offers extensive parking facilities, three separate living spaces, and open views to the greenery, adding to its uniqueness and allowing flexible layout according to different needs.

In this picturesque location full of greenery and a friendly community, the house is situated within walking distance of UNSW, sports clubs, golf courses, children's playgrounds, and a light rail stop, ensuring easy access to urban infrastructure and recreational opportunities.

The house has a balanced layout with living spaces and bedrooms located on both floors. The kitchen is equipped with granite worktops, premium Miele appliances, and a central island. The interior is adorned with elegant Brush Box wooden parquet floors, stylish internal shutters, high ceilings, and air conditioning for maximum comfort. The upper floor offers a flexible space overlooking the park, which can be used as a living area or a grand master bedroom.

Built-up area	350 m ²
Floor area	350 m ²
Building energy rating	G

House Seven Bedroom

350 m², Land 569 m² Sydney, Australia

Price upon request



The spacious layout provides plenty of room for a large or multi-generational family. A covered terrace leads to a garden with a citrus grove, creating an ideal setting for outdoor relaxation and social gatherings. A two-car garage and a closed driveway allow convenient parking and provide ample space for multiple vehicles.

This home combines a prestigious location, thoughtful design, and functionality, making it an ideal residence for families seeking comfort and tranquility in an attractive park-surrounded environment.

VÁŠ MAKLÉR



Nicolas Peknik

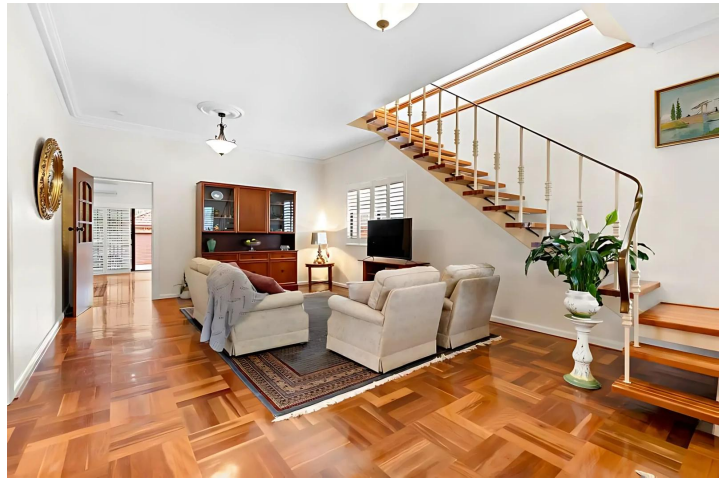
+420 602 544 858

info@philip-frank.com

House Seven Bedroom

350 m², Land 569 m² Sydney, Australia

Price upon request



House Seven Bedroom

350 m², Land 569 m² Sydney, Australia

Price upon request



The site plan and floor plan are not to scale. Measurements are indicative and not to be relied upon. Builders should refer to the architectural drawings. They are not intended to be used for construction purposes.