



## Two-bedroom Apartment

111 m<sup>2</sup> Praha 4, Milevská

3 600 € per month



Layout  
**Two-bedroom**

Area  
**111 m<sup>2</sup>**

Parking  
**2x parking\_tent**

Renting a prestigious, luxurious, fully equipped 3+kk apartment, 111m<sup>2</sup> with a sunny walk-around terrace of 26 m<sup>2</sup> and two parking spaces on the 7th floor in a project unmatched in all of Central Europe. The Tower is a home with services for the most demanding clients, inspired by a similar lifestyle standard of residences in New York. It is designed by our leading architect Radan Hubička. The apartment is available immediately.

The 3+kk apartment has terraces along the entire perimeter of the apartment with panoramic views of Prague from all rooms. The apartment consists of a spacious living room with a kitchenette equipped with appliances, 2 bedrooms, 2 bathrooms. The apartment has a spacious pantry. An entrance hall with built-in wardrobes and a separate toilet. The apartment also offers ample storage space and is fully equipped with built-in wardrobes, kitchen units with appliances, a washing machine, and a dryer.

Wooden floors are in the living room with the kitchen and in corridors, carpets in bedrooms, bathrooms made of Carrara marble, automatic window blinds. The apartment includes 2 underground garage spaces and a cellar cubicle (6.4 m<sup>2</sup>).

Price	3 600 €
Floor area	111 m <sup>2</sup>
Cellar	6 m <sup>2</sup>
Floor	7
Elevator	Ano
Parking	2x parking_tent
Building energy rating	B

## Two-bedroom Apartment

111 m<sup>2</sup> Praha 4, Milevská

3 600 € per month



The rent is 90,000 CZK/month and the allocable service charges are 18,100 CZK/month. Electricity is transferred to the tenant. The landlord reserves the right to select a tenant based on their own criteria.

On the ground floor of the building, a 24/7 reception offers concierge services and ensures your maximum safety and comfort. The third floor features a clubhouse tier offering a private pool, hot tub, sauna, steam sauna, fitness center, and other spaces for relaxation (yoga), business meetings, and for your children.

Additionally, in the building, you will find a private cinema, a golf simulator, fast-charging stations for electric vehicles, and a bicycle washing room. In Tower, Prague is a home with services for the most demanding clients. We highly recommend viewing this beautiful property.

## VÁŠ MAKLÉR



**Hana Fisherová**

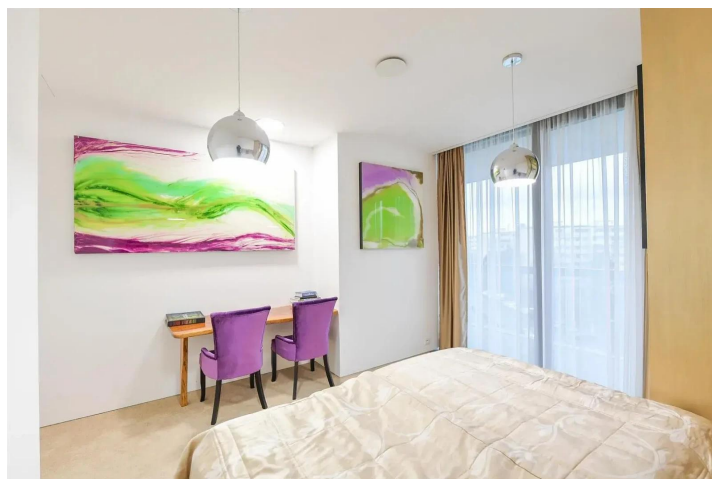
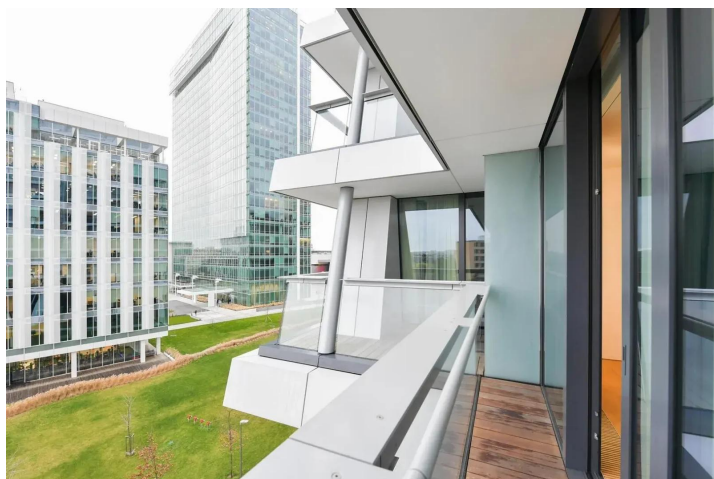
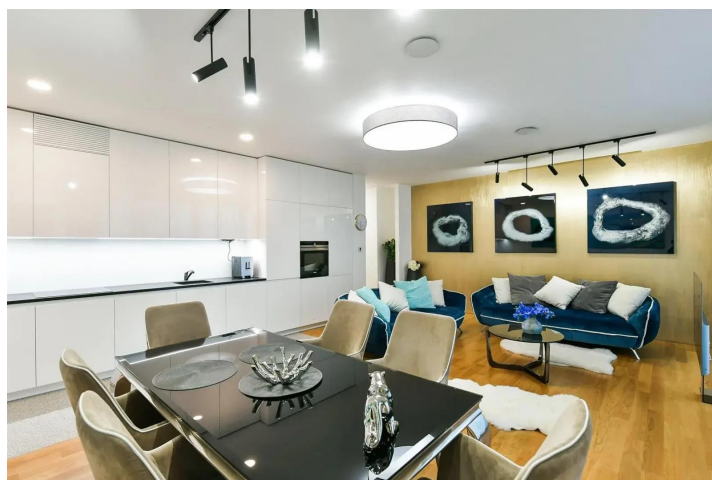
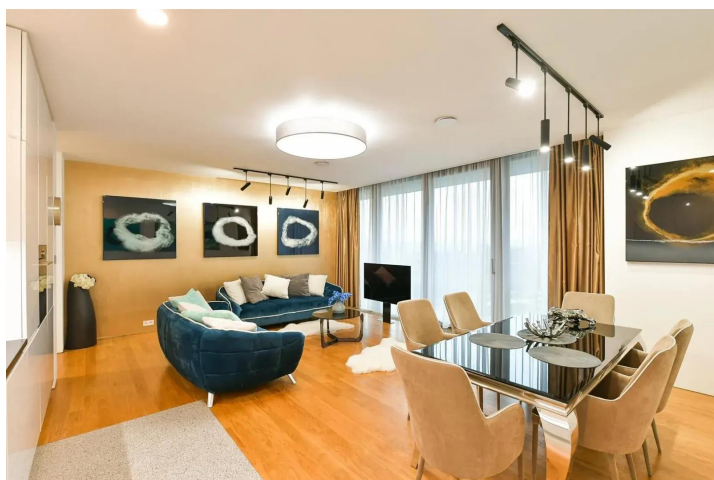
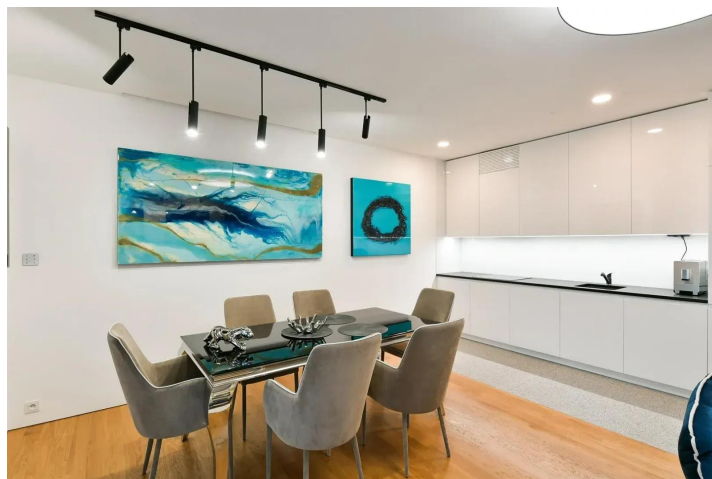
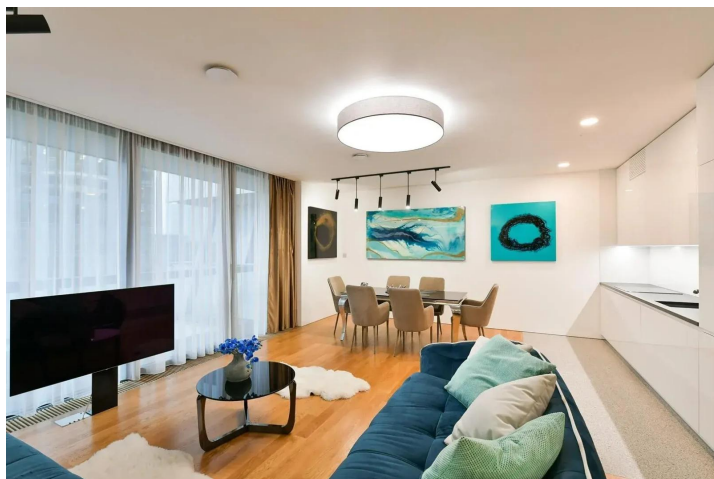
+420 602 544 858

[info@philip-frank.com](mailto:info@philip-frank.com)

# Two-bedroom Apartment

111 m<sup>2</sup> Praha 4, Milevská

3 600 € per month

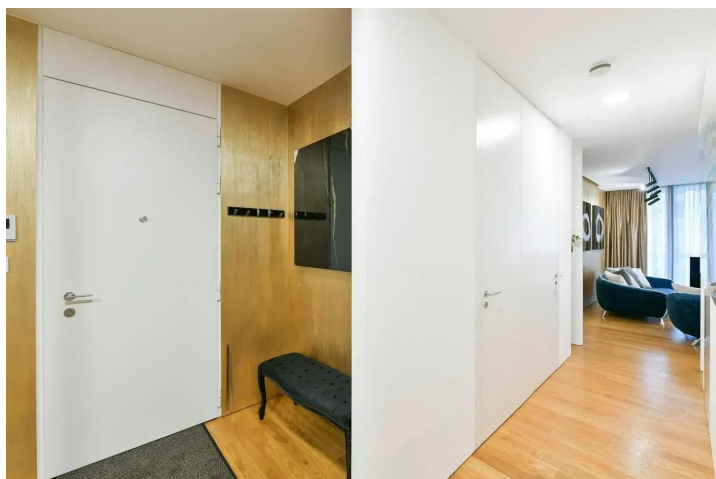




# Two-bedroom Apartment

111 m<sup>2</sup> Praha 4, Milevská

3 600 € per month

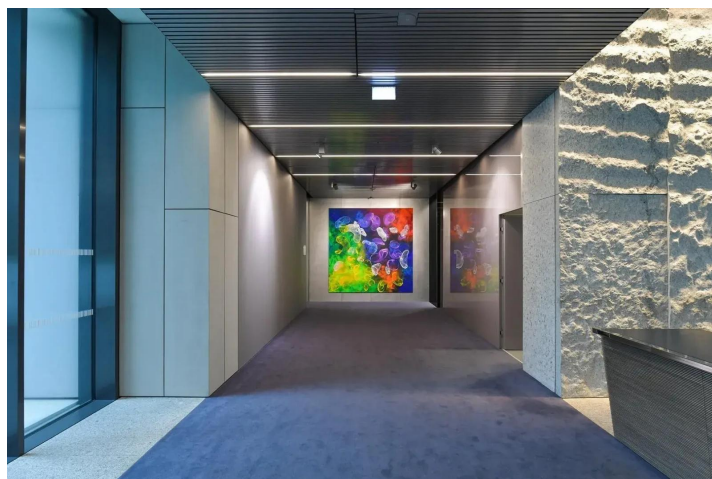
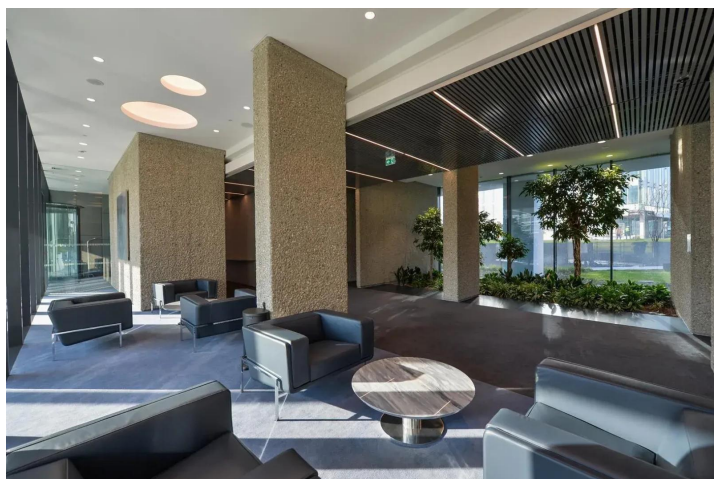
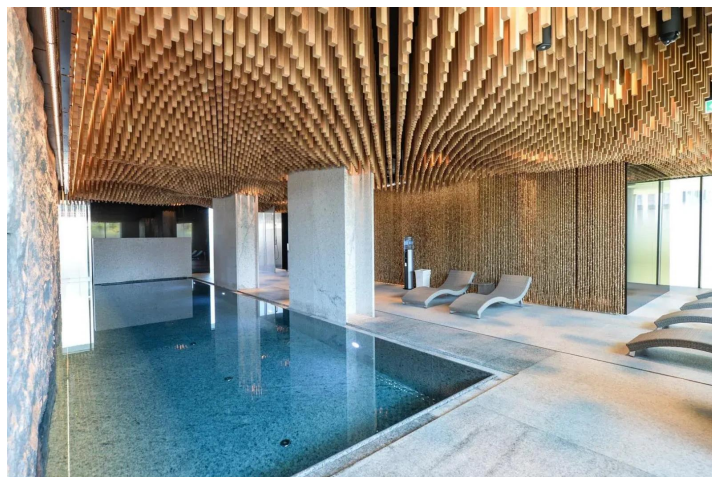
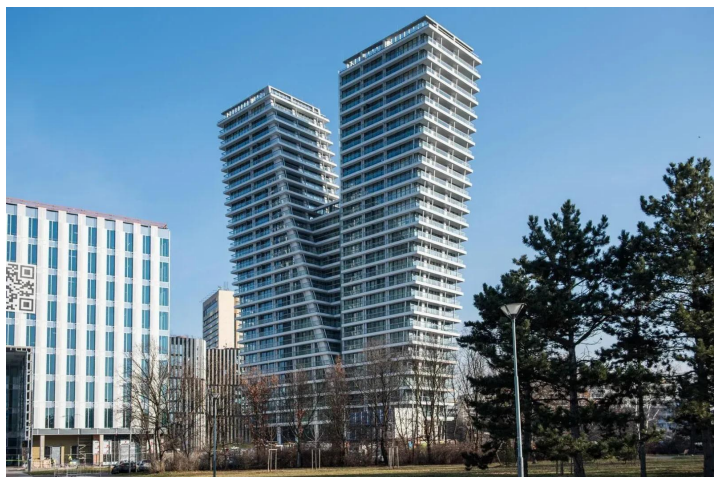




# Two-bedroom Apartment

111 m<sup>2</sup> Praha 4, Milevská

3 600 € per month



# Two-bedroom Apartment

111 m<sup>2</sup> Praha 4, Milevská

3 600 € per month

